

### Strategic Landscape Capacity Assessment for Wind Energy in Aberdeenshire

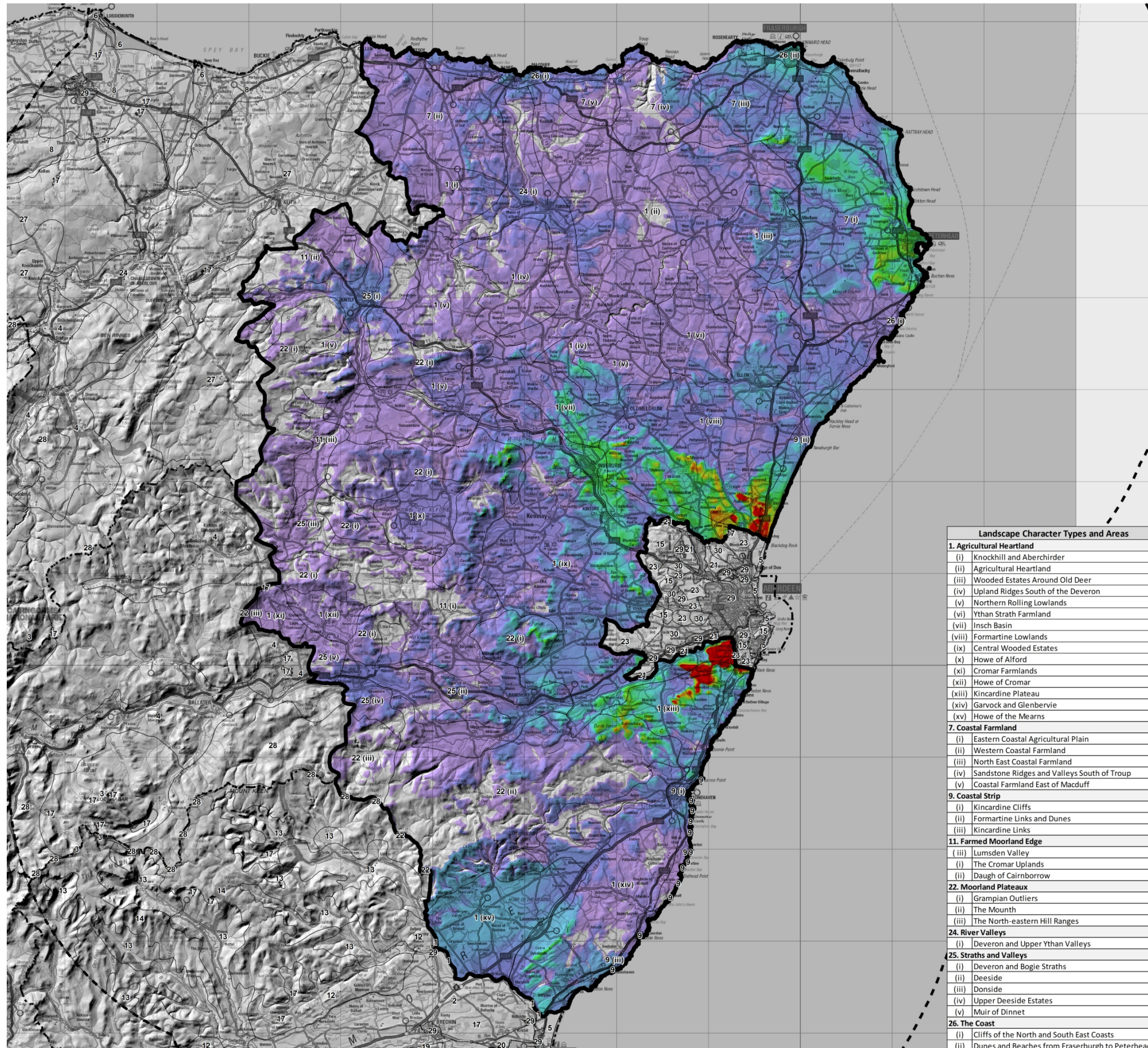
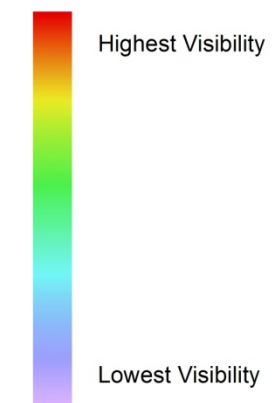
March 2014

7933\_ABS\_114

#### Legend

- Study Area
- Study Area 30km Buffer
- Scottish Local Authority Boundaries
- Landscape Character Types

#### ZTV:



Landscape Character Types and Areas	
<b>1. Agricultural Heartland</b>	
(i)	Knockhill and Aberchirder
(ii)	Agricultural Heartland
(iii)	Wooded Estates Around Old Deer
(iv)	Upland Ridges South of the Deveron
(v)	Northern Rolling Lowlands
(vi)	Ythan Strath Farmland
(vii)	Insch Basin
(viii)	Formartine Lowlands
(ix)	Central Wooded Estates
(x)	Howe of Alford
(xi)	Cromar Farmlands
(xii)	Howe of Cromar
(xiii)	Kincardine Plateau
(xiv)	Garvock and Glenberrie
(xv)	Howe of the Mearns
<b>7. Coastal Farmland</b>	
(i)	Eastern Coastal Agricultural Plain
(ii)	Western Coastal Farmland
(iii)	North East Coastal Farmland
(iv)	Sandstone Ridges and Valleys South of Troup
(v)	Coastal Farmland East of Macduff
<b>9. Coastal Strip</b>	
(i)	Kincardine Cliffs
(ii)	Formartine Links and Dunes
(iii)	Kincardine Links
<b>11. Farmed Moorland Edge</b>	
(i)	Lumsden Valley
(ii)	The Cromar Uplands
(iii)	Daugh of Cairnborrow
<b>22. Moorland Plateaux</b>	
(i)	Grampian Outliers
(ii)	The Mounth
(iii)	The North-eastern Hill Ranges
<b>24. River Valleys</b>	
(i)	Deveron and Upper Ythan Valleys
<b>25. Straths and Valleys</b>	
(i)	Deveron and Bogie Straths
(ii)	Deeside
(iii)	Donside
(iv)	Upper Deeside Estates
(v)	Muir of Dinnet
<b>26. The Coast</b>	
(i)	Cliffs of the North and South East Coasts
(ii)	Dunes and Beaches from Fraserburgh to Peterhead

**Figure 4.2c**

Visibility from Settlements (30m high object)



This map is reproduced from Ordnance Survey material with the permission of Ordnance Survey on behalf of the Controller of Her Majesty's Stationary Office © Crown Copyright 2014. Unauthorised reproduction infringes Crown copyright and may lead to prosecution or civil proceedings. AL100017966

### Strategic Landscape Capacity Assessment for Wind Energy in Aberdeenshire

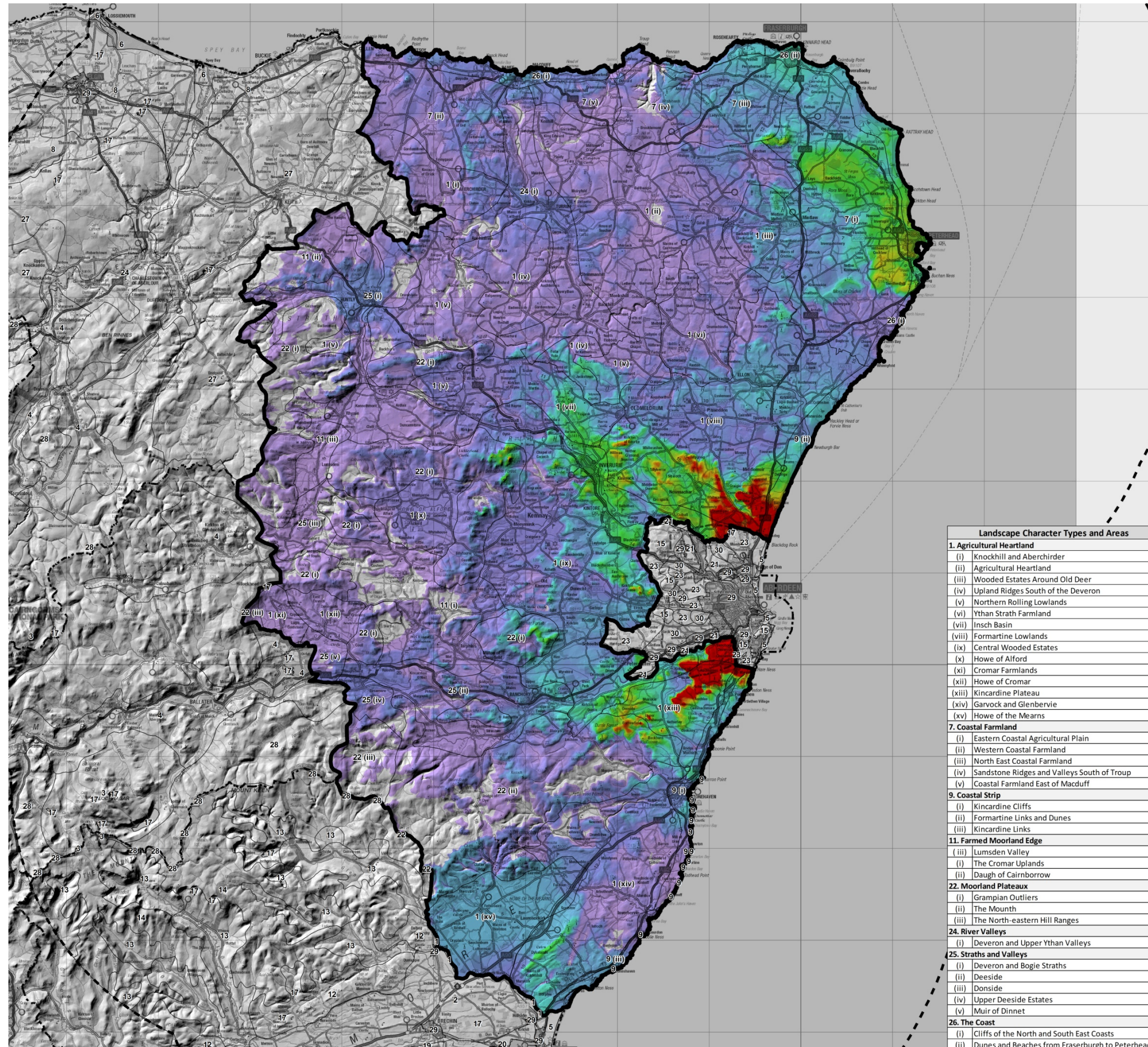
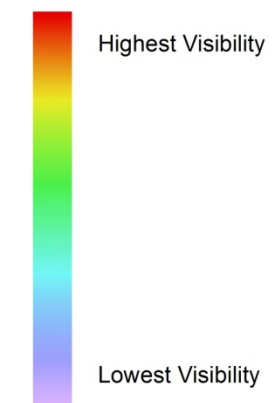
March 2014

7933\_ABS\_115

#### Legend

- Study Area
- Study Area 30km Buffer
- Scottish Local Authority Boundaries
- Landscape Character Types

#### ZTV:



Landscape Character Types and Areas	
<b>1. Agricultural Heartland</b>	
(i)	Knockhill and Aberchirder
(ii)	Agricultural Heartland
(iii)	Wooded Estates Around Old Deer
(iv)	Upland Ridges South of the Deveron
(v)	Northern Rolling Lowlands
(vi)	Ythan Strath Farmland
(vii)	Insch Basin
(viii)	Formartine Lowlands
(ix)	Central Wooded Estates
(x)	Howe of Alford
(xi)	Cromar Farmlands
(xii)	Howe of Cromar
(xiii)	Kincardine Plateau
(xiv)	Garvock and Glenberrie
(xv)	Howe of the Mearns
<b>7. Coastal Farmland</b>	
(i)	Eastern Coastal Agricultural Plain
(ii)	Western Coastal Farmland
(iii)	North East Coastal Farmland
(iv)	Sandstone Ridges and Valleys South of Troup
(v)	Coastal Farmland East of Macduff
<b>9. Coastal Strip</b>	
(i)	Kincardine Cliffs
(ii)	Formartine Links and Dunes
(iii)	Kincardine Links
<b>11. Farmed Moorland Edge</b>	
(i)	Lumsden Valley
(ii)	The Cromar Uplands
(iii)	Daugh of Cairnborrow
<b>22. Moorland Plateaux</b>	
(i)	Grampian Outliers
(ii)	The Mounth
(iii)	The North-eastern Hill Ranges
<b>24. River Valleys</b>	
(i)	Deveron and Upper Ythan Valleys
<b>25. Straths and Valleys</b>	
(i)	Deveron and Bogie Straths
(ii)	Deeside
(iii)	Donside
(iv)	Upper Deeside Estates
(v)	Muir of Dinnet
<b>26. The Coast</b>	
(i)	Cliffs of the North and South East Coasts
(ii)	Dunes and Beaches from Fraserburgh to Peterhead

Figure 4.2d

Visibility from Settlements (50m high object)



This map is reproduced from Ordnance Survey material with the permission of Ordnance Survey on behalf of the Controller of Her Majesty's Stationary Office © Crown Copyright 2014. Unauthorised reproduction infringes Crown copyright and may lead to prosecution or civil proceedings. AL100017966

### Strategic Landscape Capacity Assessment for Wind Energy in Aberdeenshire

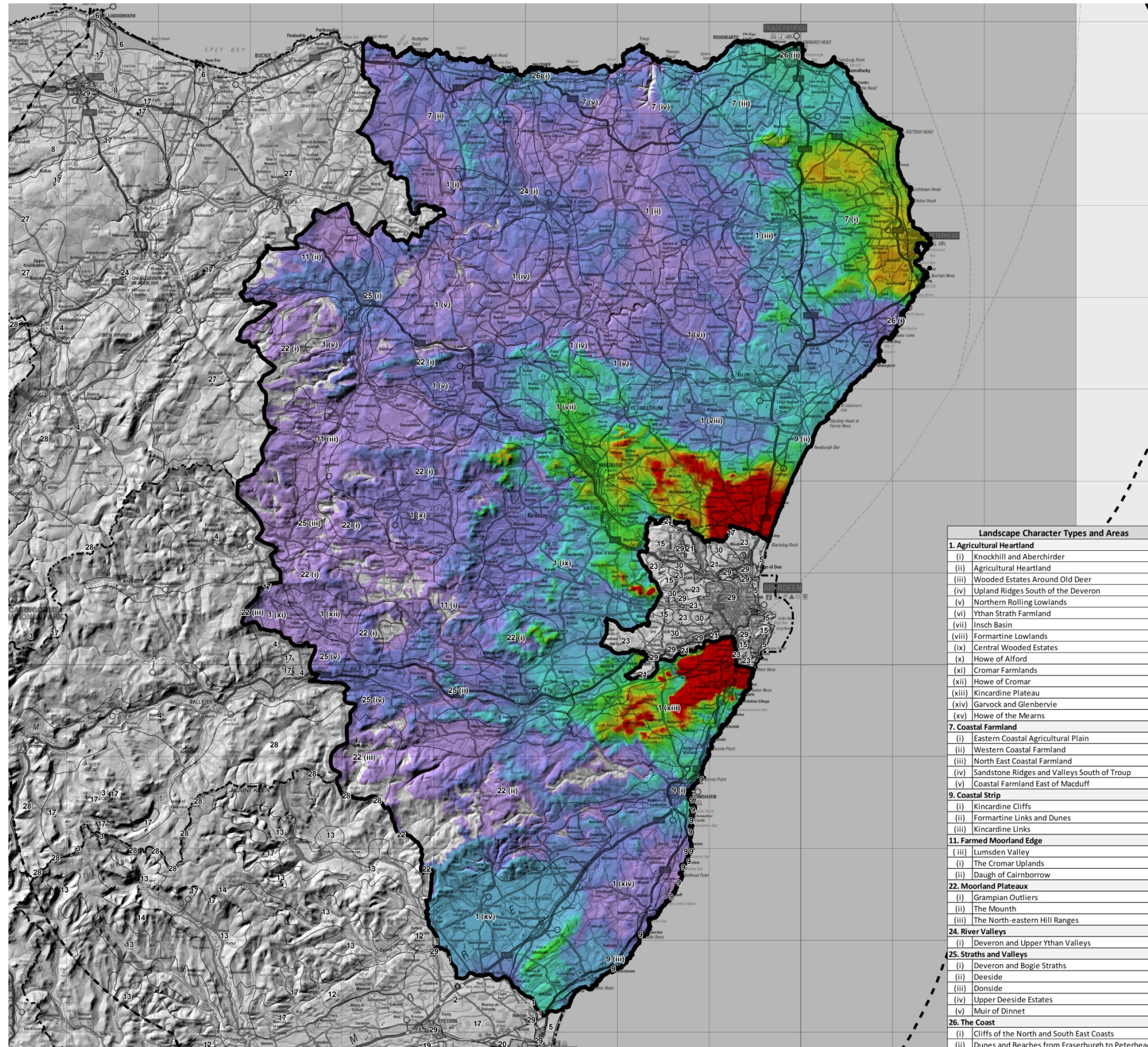
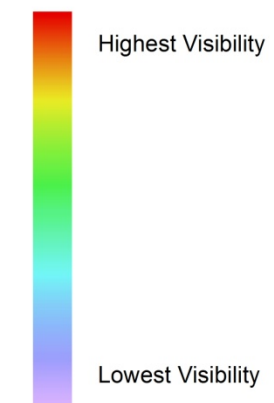
March 2014

7933\_ABS\_116

#### Legend

- Study Area
- Study Area 30km Buffer
- Scottish Local Authority Boundaries
- Landscape Character Types

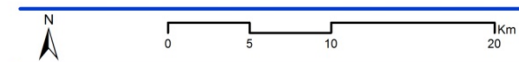
#### ZTV:



Landscape Character Types and Areas	
<b>1. Agricultural Heartland</b>	
(i)	Knockhill and Aberchirder
(ii)	Agricultural Heartland
(iii)	Wooded Estates Around Old Deer
(iv)	Upland Ridges South of the Deveron
(v)	Northern Rolling Lowlands
(vi)	Ythan Strath Farmland
(vii)	Insch Basin
(viii)	Formartine Lowlands
(ix)	Central Wooded Estates
(x)	Howe of Alford
(xi)	Cromar Farmlands
(xii)	Howe of Cromar
(xiii)	Kincardine Plateau
(xiv)	Garvock and Glenberrie
(xv)	Howe of the Mearns
<b>7. Coastal Farmland</b>	
(i)	Eastern Coastal Agricultural Plain
(ii)	Western Coastal Farmland
(iii)	North East Coastal Farmland
(iv)	Sandstone Ridges and Valleys South of Troup
(v)	Coastal Farmland East of Macduff
<b>9. Coastal Strip</b>	
(i)	Kincardine Cliffs
(ii)	Formartine Links and Dunes
(iii)	Kincardine Links
<b>11. Farmed Moorland Edge</b>	
(i)	Lumsden Valley
(ii)	The Cromar Uplands
(iii)	Daugh of Cairnborrow
<b>22. Moorland Plateaux</b>	
(i)	Grampian Outliers
(ii)	The Mounth
(iii)	The North-eastern Hill Ranges
<b>24. River Valleys</b>	
(i)	Deveron and Upper Ythan Valleys
<b>25. Straths and Valleys</b>	
(i)	Deveron and Bogie Straths
(ii)	Deeside
(iii)	Donside
(iv)	Upper Deeside Estates
(v)	Muir of Dinnert
<b>26. The Coast</b>	
(i)	Cliffs of the North and South East Coasts
(ii)	Dunes and Beaches from Fraserburgh to Peterhead

Figure 4.2e

Visibility from Settlements (80m high object)



This map is reproduced from Ordnance Survey material with the permission of Ordnance Survey on behalf of the Controller of Her Majesty's Stationary Office © Crown Copyright 2014. Unauthorised reproduction infringes Crown copyright and may lead to prosecution or civil proceedings. AL100017966