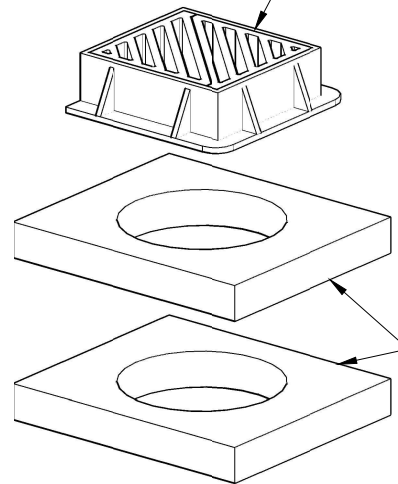
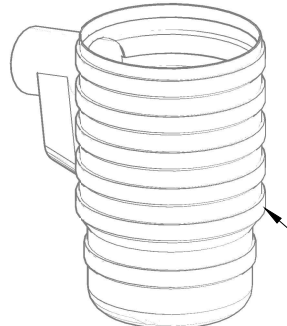


- NOTES:**
- All dimensions in millimetres.
 - Grating and frame to be at least Class D400 in accordance with BS EN 124 and be marked with kitemark. Grating shall meet requirements for Type R classification in accordance with CD 526. Mesh-type grating to be used in shared surfaces and other areas where pedestrian activity would be expected.
 - Gully cover slabs to be 100 thick and comply with BS 5911-6.
 - Gully former to have current HAPAS certificate.
 - Concrete surround to gullies shall fill the whole void between the gully pot and the face of the excavation. The concrete shall be compacted by a vibrating poker to remove voids.
 - The concrete gully slab shall not overhang the inner rim of the gully pot by more than 30mm at any point.
 - Concrete surround to outlet pipe to continue to a depth of cover of at least 900 below earthworks outline.
 - Bedding materials shall be non-shrink with a minimum workable life of 15 minutes, a compressive strength exceeding 30N/mm² in three hours, a tensile strength exceeding 5N/mm² in three hours and shall be laid strictly in accordance with the manufacturers' recommendations. Bedding materials shall have a current HAPAS certificate for this use.
 - Accurate setting out for position, depth and crossfall will be necessary to comply with this detail. Packing materials shall not be permitted in new gully installations.
 - The Contractor/ Developer shall provide a pump or gully emptier vehicle and operator(s) to enable a complete internal inspection of the gully at the end of the maintenance period at a time and date agreed with the Engineer's Representative. Costs shall be borne by the Contractor/ Developer.

150 deep double triangular non-rock ductile iron grating and frame. 3-flanged frame (shown) shall be used at kerbside. 4-flanged frame to be used elsewhere.



2 no "square" gully cover slabs

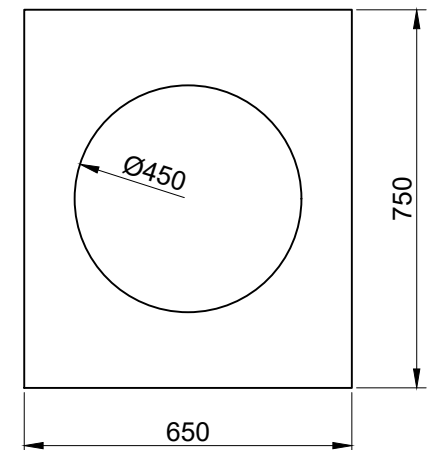


450Ø HDPE trapped gully former with rodding eye stopper

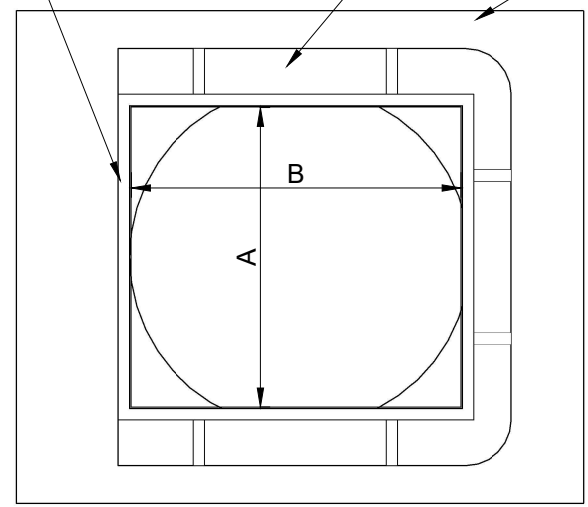
frame to be positioned centrally over cover slab opening

gully frame (grating omitted for clarity)

gully cover slab



GULLY COVER SLAB



Clear opening dimension requirements:
 $400 \leq A \leq 455$
 $400 \leq B \leq 455$
 $(A + B) \geq 840$

a	References updated, note 2 revised.	04/21
Rev	Amendment	Date