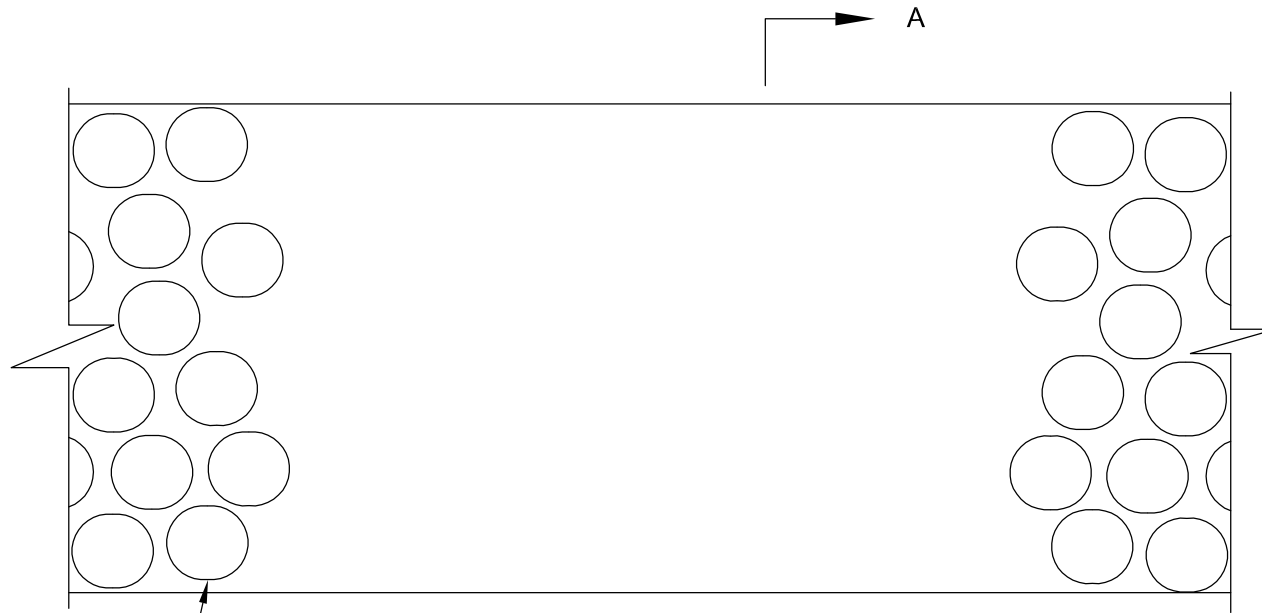


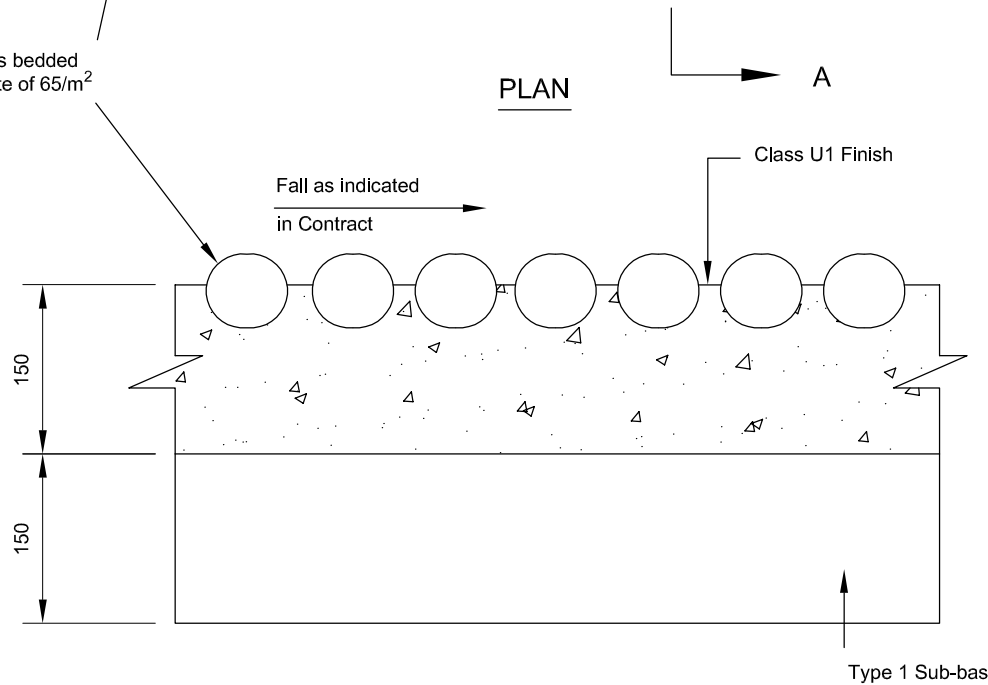
NOTES

1. All dimensions are in millimetres unless otherwise stated.
2. For detail of layout see contract drawing.



100mm nominal diameter cobbles bedded $\frac{2}{3}$ deep in ST5 concrete at a rate of 65/m²

PLAN



SECTION A - A

No.	Date	Description
↑		AMENDMENTS

HIGHWAY CONSTRUCTION DETAILS

EDGE OF PAVEMENT DETAILS

DETERRENT PAVING
TYPE 1 (COBBLES)

Drawing No.

B74