

From mountain to sea

Low Cost Shared Equity FOR SALE

Flat 2, The Vale Apartments, Main Street, Alford, AB33 8AA

**2 Bed Ground Floor Flat
£96,470**



Low Cost Shared Equity - Property Schedule

Properties Available

2 bed ground floor flat

Properties Available From

Available now

Floor Space

57 m²

Price

£96,470

Accommodation

Open Plan Kitchen/ Dining/ Living Room, shower room and 2 bedrooms both with built in mirrored wardrobes, one of which has patio doors out to the parking area.

Income Threshold

£36,000 or less.

Garden

Shared Drying Green

Council Tax Band

Band C

Parking

One allocated parking space located to the front of the property

Factoring Charge

To be confirmed by developer

Heating Type

Electric Heating

Eligibility Criteria

See Guidance Notes for Eligibility Criteria.

Energy Performance Rating

Unknown

Closing Date

Return applications as soon as possible. Applications will be assessed on a first come basis.

Disclaimer

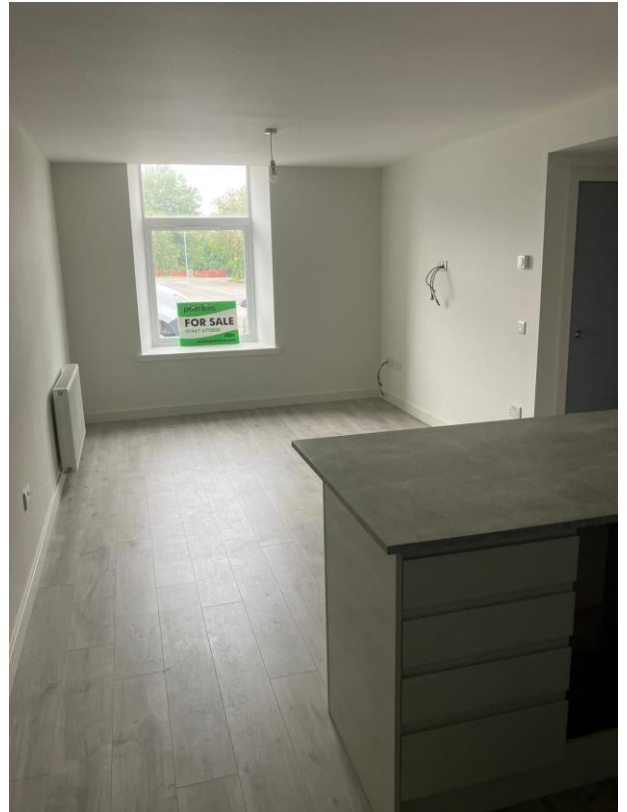
The information in this schedule regarding the specific property has been supplied by the owner and whilst every care has been taken in the preparation of this schedule and the information is believed to be correct, it does not warrant or constitute any offer or contract.

***Factoring fees may be subject to change and may require an initial deposit. Please discuss with your solicitor if nominated.**

Open Plan Kitchen/ Living Room



Living Room Area



Bedroom 1



Alternative View of Bedroom 1



Bedroom 2



Alternative View of Bedroom 2



Shower Room



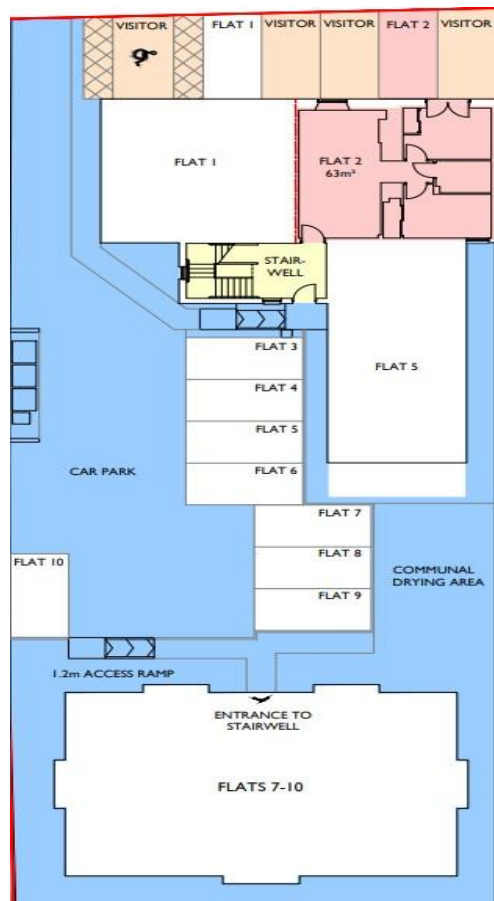
Bathroom



Floor Plan



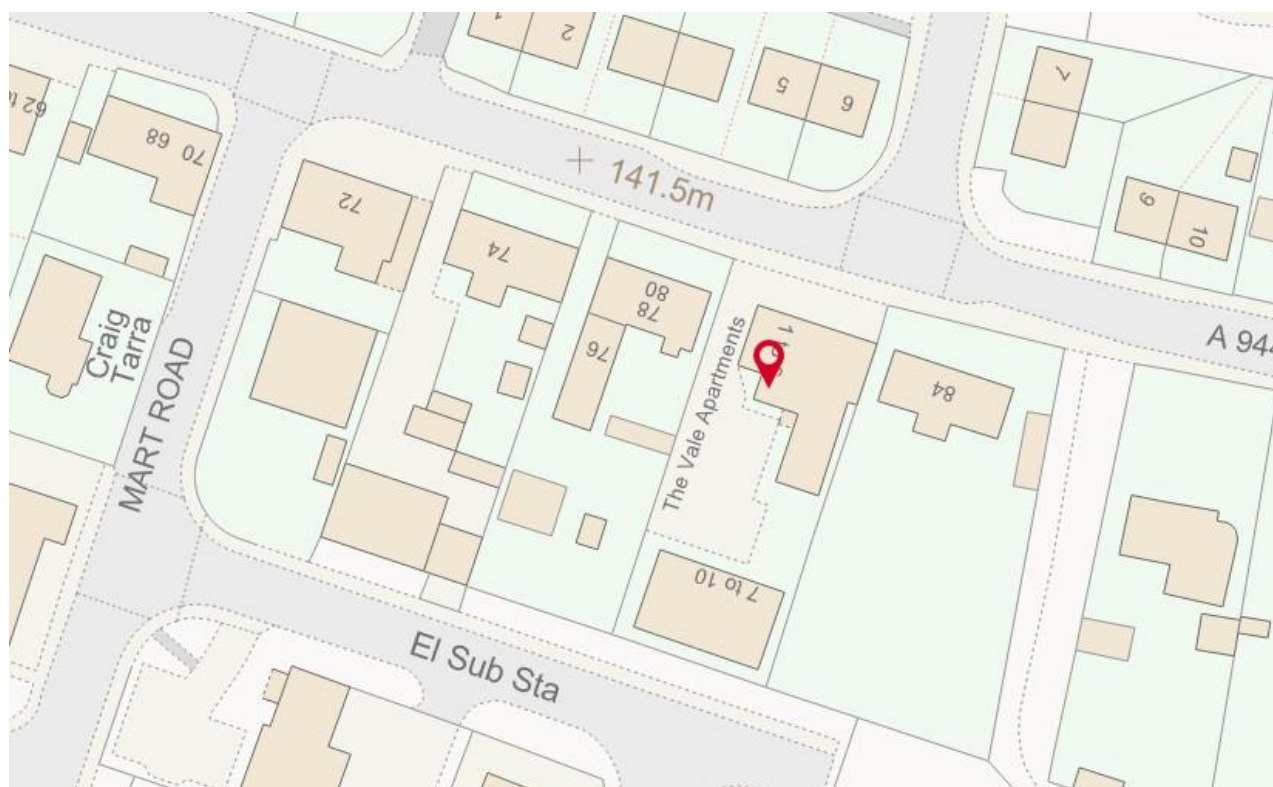
Site Plan



Location



Alford is a thriving village enjoying a host of excellent amenities with a Community Campus providing a nursery, primary school, academy, swimming pool and community library. Additional recreation activities include a golf course, tennis, bowling, a dry ski slope and the Haughton Country Park. The village maintains a good range of shops, a library and health centre. Alford is within easy commuting distance of Westhill, Aberdeen, Dyce and Inverurie.



Further Information

For further information please contact:

Development Officer - 01467 534685

LCHO@aberdeenshire.gov.uk